

CITRUS COUNTY SCHOOL DISTRICT
Summary of Millage Levies
and
District Ad Valorem Tax Revenue

Millage Rates Levied:	2002-03	2003-04	2004-05	2005-06	2006-07	2007-08	2008-09	2009-10	2010-11	2011-12
Local Required Effort	6.023	5.662	5.521	5.225	5.014	4.767	5.179	5.317	5.319	5.527
Prior Period Adjustment									0.023	0.029
Basic Discretionary	0.510	0.510	0.510	0.510	0.510	0.510	0.498	0.748	0.748	0.748
Supplemental Discretionary	0.134	0.124	0.115	0.189	0.143	0.136	0.142	0.000	0.000	0.000
Capital Improvement	2.000	2.000	2.000	2.000	1.800	2.000	1.750	1.500	1.500	1.500
Critical Capital Outlay								0.250	0.250	0.250
Total	8.667	8.296	8.146	7.924	7.467	7.413	7.569	7.815	7.840	8.054

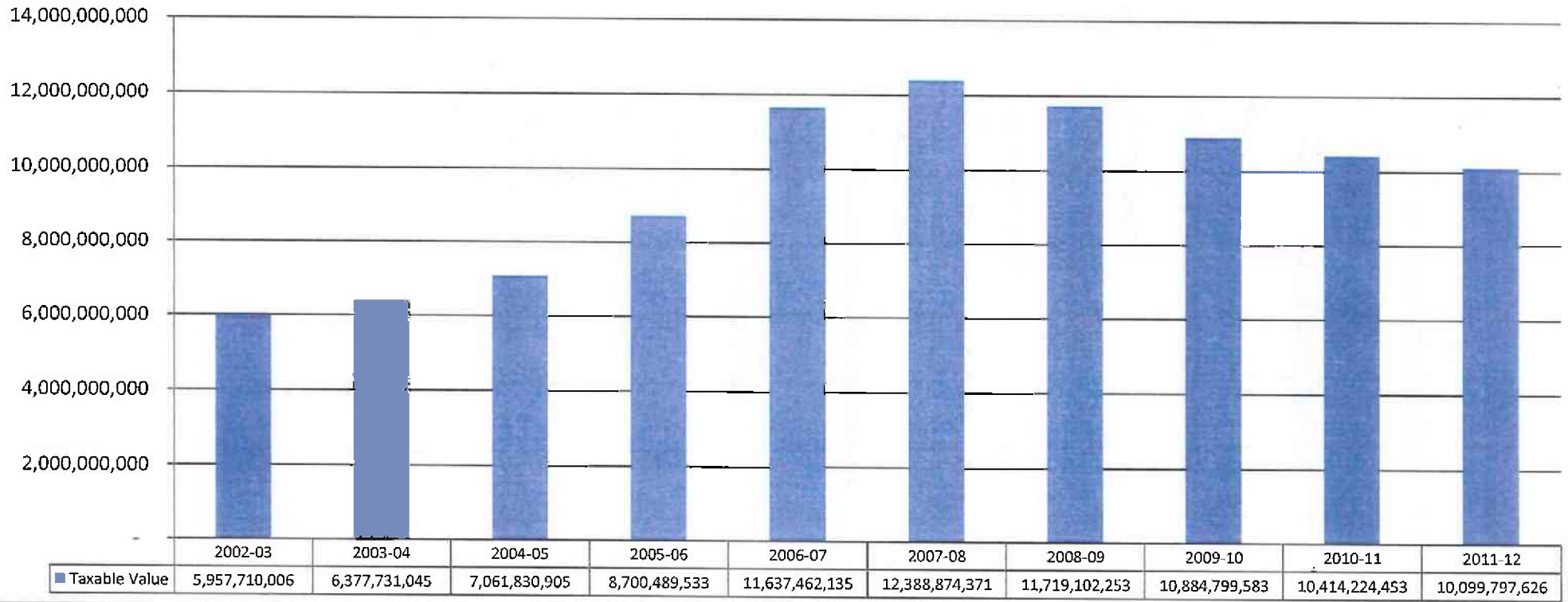
	2002-03	2003-04	2004-05	2005-06	2006-07	2007-08	2008-09	2009-10	2010-11	2011-12
Taxable Value	5,957,710,006	6,377,731,045	7,061,830,905	8,700,489,533	11,637,462,135	12,388,874,371	11,719,102,253	10,884,799,583	10,414,224,453	10,099,797,626

Ad Valorem Tax Budget:	2002-03	2003-04	2004-05	2005-06	2006-07	2007-08	2008-09	2009-10	2010-11	2011-12
Local Required Effort	34,089,123	34,305,178	37,038,950	43,187,055	55,432,723	56,104,876	57,650,514	54,980,755	53,177,529	53,588,718
Basic Discretionary	2,886,510	3,090,011	3,421,457	4,215,387	5,638,350	6,002,410	5,543,533	7,734,739	7,478,246	7,252,463
Supplemental Discretionary	758,416	751,297	771,505	1,562,173	1,574,407	1,600,643	1,580,686	-	-	-
Capital Improvement	11,319,649	12,117,689	13,417,479	16,530,930	19,900,060	23,538,861	19,483,007	15,510,839	14,996,483	14,543,709
Critical Capital Outlay								2,585,140	2,499,414	2,423,951
Total	49,053,699	50,264,174	54,649,391	65,495,545	82,545,541	87,246,790	84,257,740	80,811,473	78,151,673	77,808,841

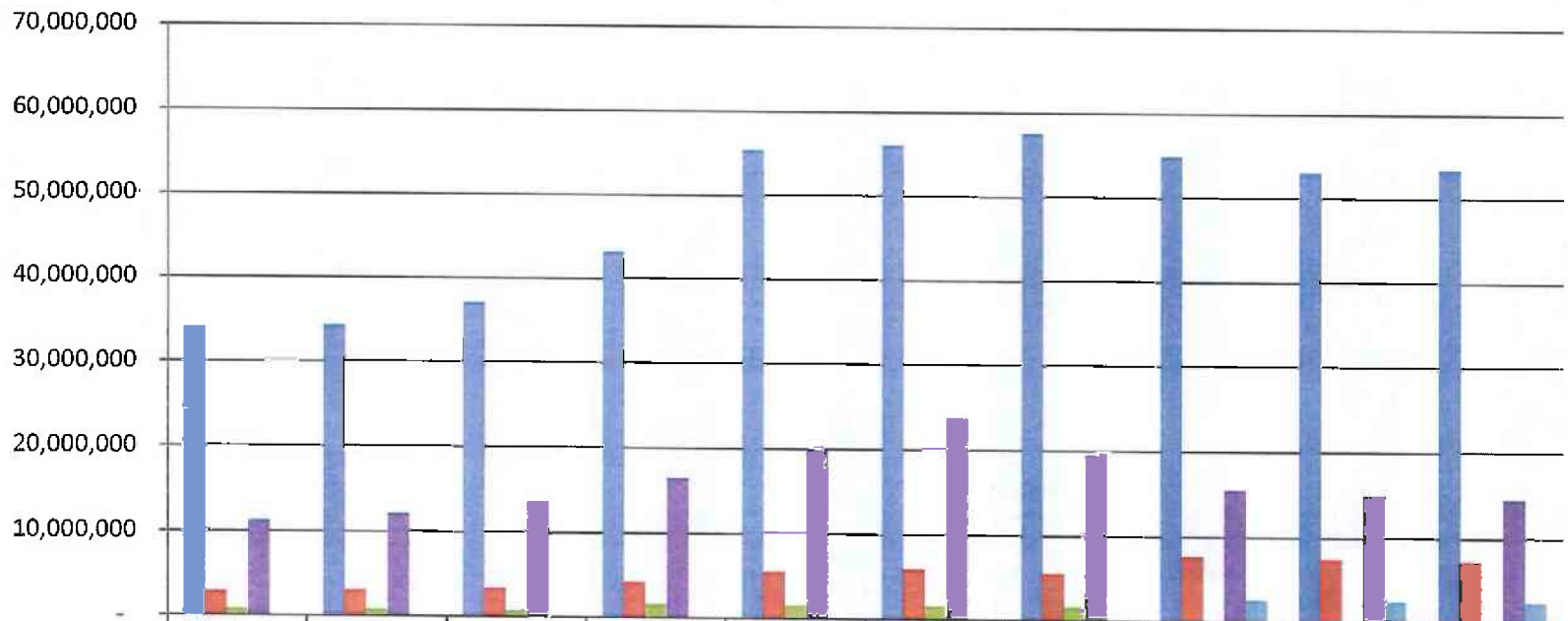
Taxes Collected:	2002-03	2003-04	2004-05	2005-06	2006-07	2007-08	2008-09	2009-10	2010-11	2011-12
Required Local Effort & Discretionary	38,345,823	39,281,791	42,560,874	49,951,190	65,676,604	64,911,511	65,906,003	63,100,006	61,263,223	
Capital Outlay	11,498,295	12,507,852	13,575,125	17,110,698	20,860,752	23,827,700	20,007,764	18,120,837	16,990,090	
Total	49,844,118	51,789,643	56,135,999	67,061,888	86,537,356	88,739,211	85,913,767	81,220,843	78,253,313	-

Percent of Taxes Budgeted to Taxes Collected:	as of 6/29/11									
	98.41%	97.05%	97.35%	97.66%	95.39%	98.32%	98.07%	99.50%	99.87%	#DIV/0!

Taxable Value

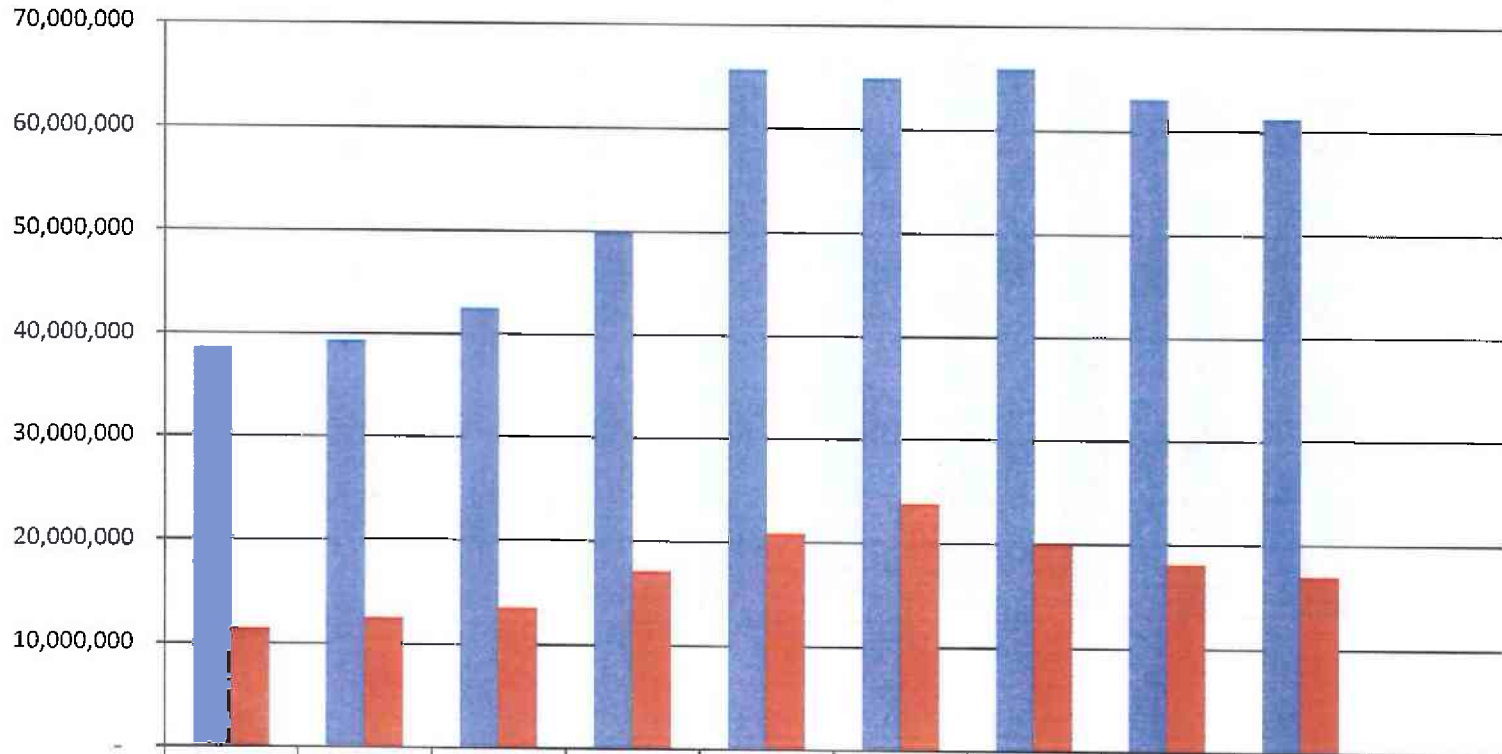


Ad Valorem Tax Budget



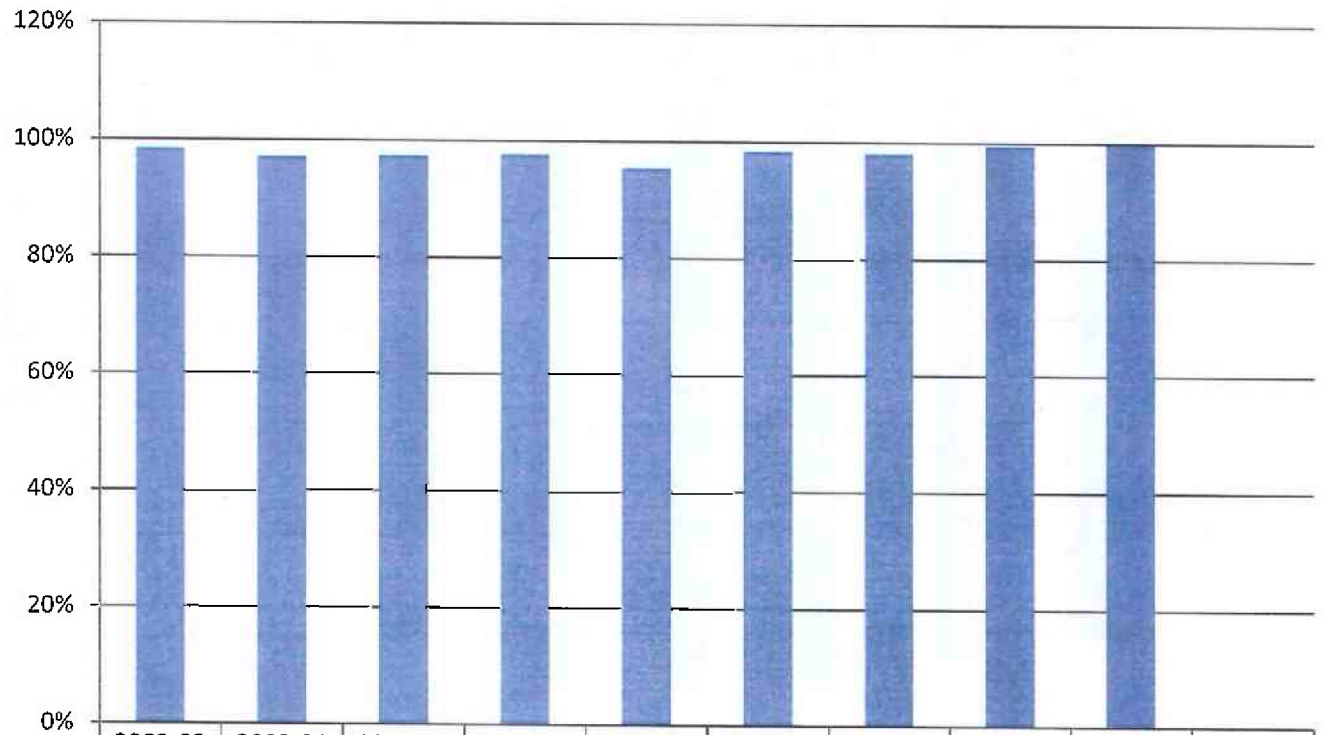
	2002-03	2003-04	2004-05	2005-06	2006-07	2007-08	2008-09	2009-10	2010-11	2011-12
Local Required Effort	34,089,123	34,305,178	37,038,950	43,187,055	55,432,723	56,104,876	57,650,514	54,980,755	53,177,529	53,588,718
Basic Discretionary	2,886,510	3,090,011	3,421,457	4,215,387	5,638,350	6,002,410	5,543,533	7,734,739	7,478,246	7,252,463
Supplemental Discretionary	758,416	751,297	771,505	1,562,173	1,574,407	1,600,643	1,580,686	-	-	-
Capital Improvement	11,319,649	12,117,689	13,417,479	16,530,930	19,900,060	23,538,861	19,483,007	15,510,839	14,996,483	14,543,709
Critical Capital Outlay								2,585,140	2,499,414	2,423,951

Taxes Collected



	2002-03	2003-04	2004-05	2005-06	2006-07	2007-08	2008-09	2009-10	2010-11	2011-12
Required Local Effort & Discretionary	38,345,823	39,281,791	42,560,874	49,951,190	65,676,604	64,911,511	65,906,003	63,100,006	61,263,223	
Capital Outlay	11,498,295	12,507,852	13,575,125	17,110,698	20,860,752	23,827,700	20,007,764	18,120,837	16,990,090	

Percent of Taxes Budgeted to Taxes Collected



■ Percent of Taxes Budgeted to Taxes Collected:

2002-03	2003-04	2004-05	2005-06	2006-07	2007-08	2008-09	2009-10	2010-11	2011-12
98.41%	97.05%	97.35%	97.66%	95.39%	98.32%	98.07%	99.50%	99.87%	0.00%